

GARAGE/SHOP SERIES BIG MAXX GAS UNIT HEATERS



Model MHU45 / 45,000 BTU/HR

Model MHU75 / 75,000 BTU/HR

- Residential Garages
- Workshops
- Metal Buildings
- Warehouses
- Agricultural Buildings
- Storage Buildings

Approved For Residential & Commercial Use.

EFFICIENT AND EFFECTIVE CONVECTION HEAT.

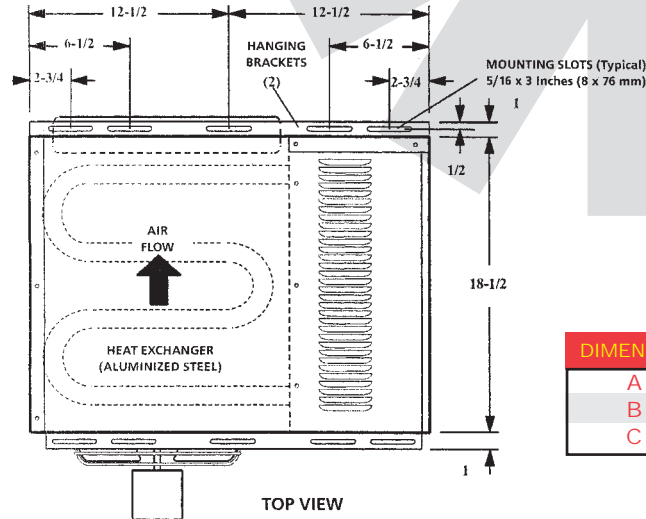
- Quiet Operation
- Attractive Low Profile Design

Easy Installation & Operating Versatility

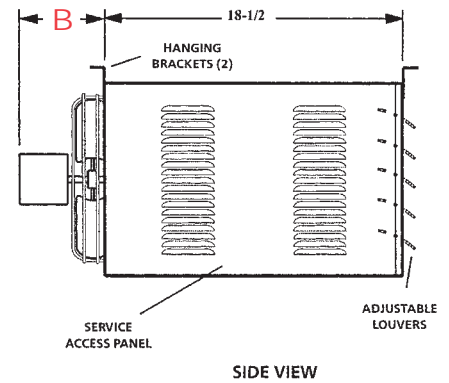
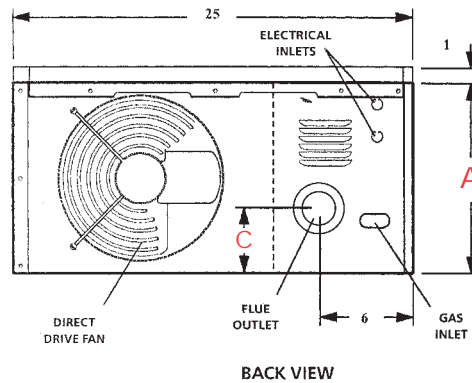
- Easily Installs From Ceiling With 2 Angle Brackets (Included)
- Power Exhaust Allows For Vertical Or Horizontal Venting
- Designed For Right Or Left Side Venting

Built-In Reliability

- Aluminized Tubular Heat Exchanger For Maximum Efficiency And Longer Life
- Spark Ignition – Features Self-Diagnostic Control Module
- Limited 3-Year Warranty On Parts And Burner
- Limited 10-Year Warranty On Heat Exchanger



DIMENSION	MHU45	MHU75
A	12"	17"
B	5 1/2"	6 1/2"
C	4 1/4"	6 3/4"



TECHNICAL DATA	MHU45NG	MHU45LP	MHU75NG	MHU75LP
Stock Number	F260045	F260145	F260775	F260875
Heating Area (SQ. FT)	700	700	1,000	1,000
Total Input (BTU/HR)*	45,000	45,000	75,000	75,000
Total Output (BTU/HR)	36,450	36,450	60,000	60,000
Air Volume (CFM)	750	750	950	950
Temperature Rise	45	45	60	60
Air Throw At 8 Feet Mounting Height (FT)	25	25	40	40
Max. Mounting Height (floor to bottom of unit FT)	10	10	12	12
FAN DATA	Number Of Fans	1	1	1
	Diameter (IN)	10	10	14
	Number Of Blades	4	4	3
	Shipping Weight (LBS)	63	63	91
FAN MOTOR DATA	Net Weight (LBS)	56	56	79
	Horsepower	1/20	1/20	1/10
	Amps @ 115V/1PH/60Hz	1.7	1.7	4.1
	RPM	1650	1650	1050
	Motor Type	SP	SP	SP
	Flue Size**	3"	3"	4"
Gas Connection	1/2"	1/2"	1/2"	
Total Unit Amps	3.0	3.0	6.0	

VENTING SPECIFICATIONS

For Vertical Venting:
 3" DIA. MHU45NG/LP (Optional Vent Kit Stock No. F102840)
 4" DIA. MHU75NG/LP (Optional Vent Kit Stock No. F102848)

For Horizontal Venting:
 4" DIA. MHU45NG/LP And MHU75NG/LP
 (Optional Vent Kit Stock No. F102845)

Optional 24-Volt Thermostat:
 Stock No. 10371

MOUNTING CLEARANCES	MHU45/75
Top	1"
Bottom	0"
Access Panel Side	18"
Non-Access Side	1"
Rear	18"
Flue	6"

* Ratings shown are for elevations up to 2,000 feet. (In Canada, refer to rating tag.) For elevations above 2,000 feet, ratings should be reduced at the rate of 4% for each 1,000 feet above sea level or as specified by local authority having jurisdiction.

NOTE: All dimensions shown in inches.

