

Endless Summer[®]



Replace Pilot



Series:
150000 – 450000
LP Gas



Tools required:

- Phillips screw driver
- #8mm open end wrench
- #10mm open end wrench
- #12mm open end wrench
- Pliers
- Leak test solution 1 part liquid soap and 3 parts water.

DANGERS and *Cautions*

- 1. Installation and repair should be done by a qualified service person.**
- 2. Use only Blue Rhino Global Sourcing, LLC. factory authorized parts. The use of any part that is not factory authorized can be dangerous. This will also void your warranty. Contact 1.800.762.1142.**

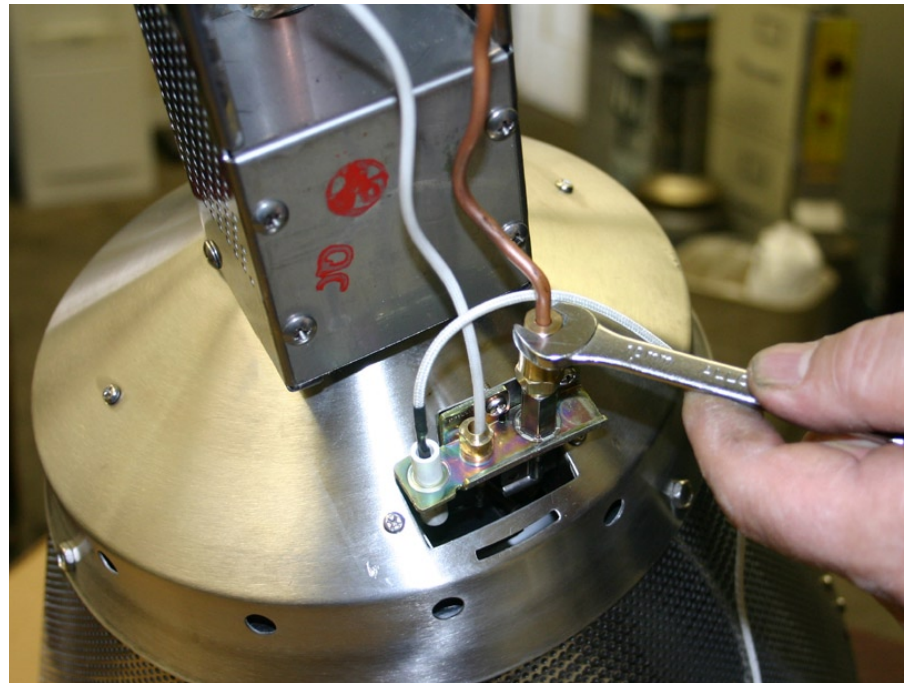


Steps 1-5

1. Turn your LP gas tank off, unscrew regulator and remove LP gas tank.
2. Remove the dome
3. Remove control knob and remove access panel
4. Disconnect gas line
5. Remove engine from post



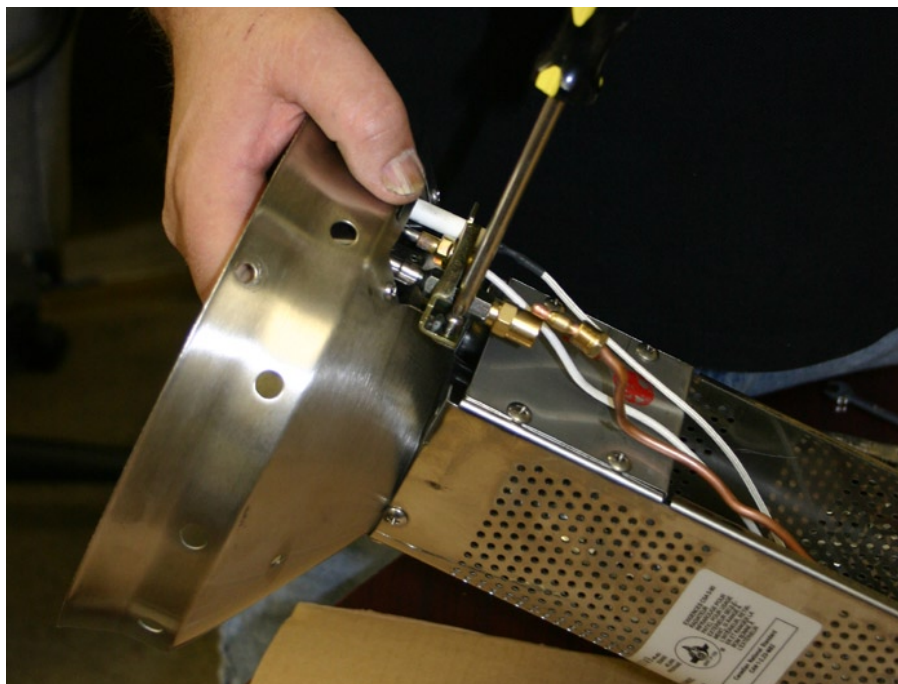
Step 6



Disconnect the pilot tube using the #10 mm open end wrench and the #12mm open end wrench.



Step 7

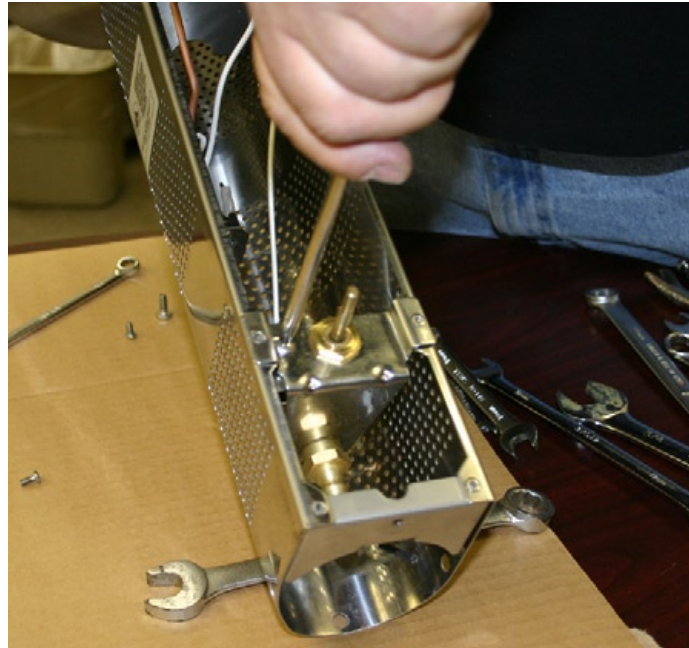


Remove the two screws that hold the pilot to the pilot bracket

Note: On the 153000 and 163000 series, there are 2 nuts that you will need to hold with the pliers to remove the pilot from the pilot bracket.



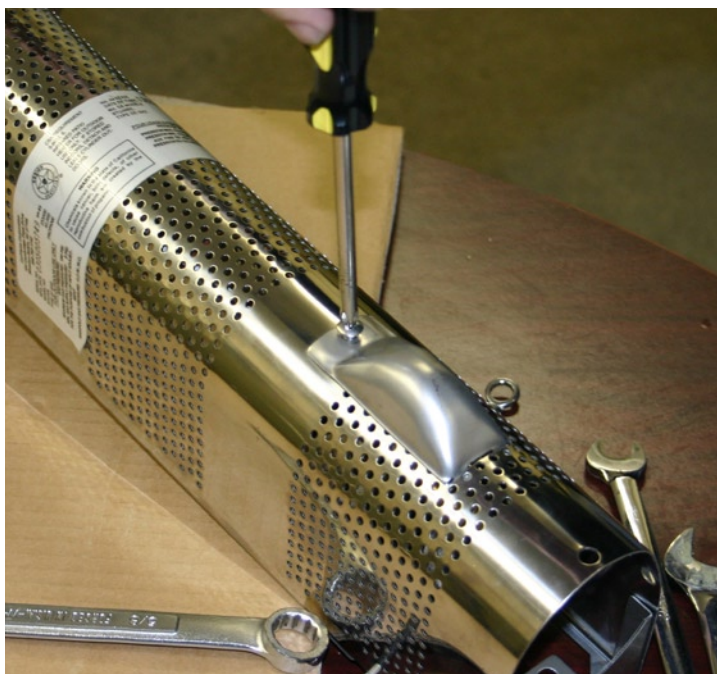
Step 8



Remove the screw holding the tip switch bracket



Step 9



1. Using a Phillips screw driver remove the access panel on the back of the valve housing.
2. Remove the thermal-couple wire on the back of the control valve using a #8 mm open end wrench.
3. Remove the pilot assembly from the valve housing.



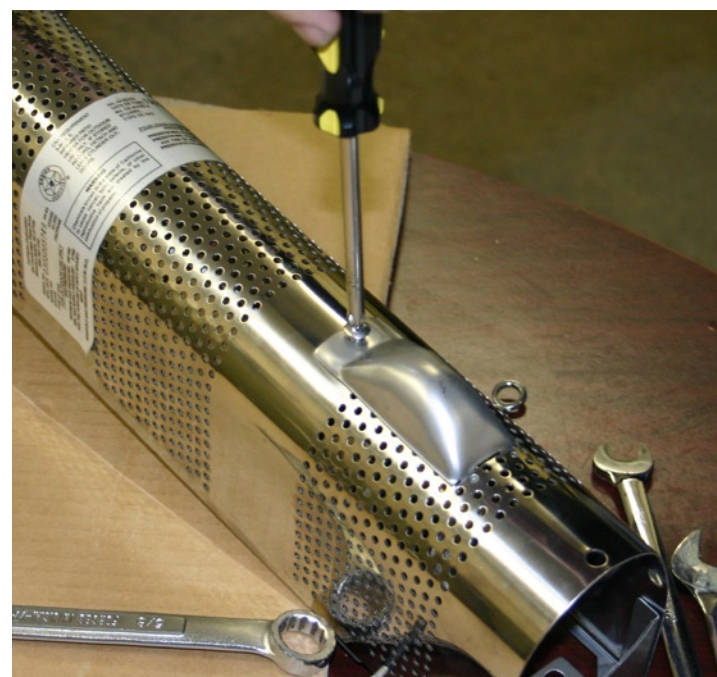
Step 10



1. Remove the tip switch from the tip switch bracket using a Phillips screw driver and pliers
2. Install the new tip switch to the bracket.



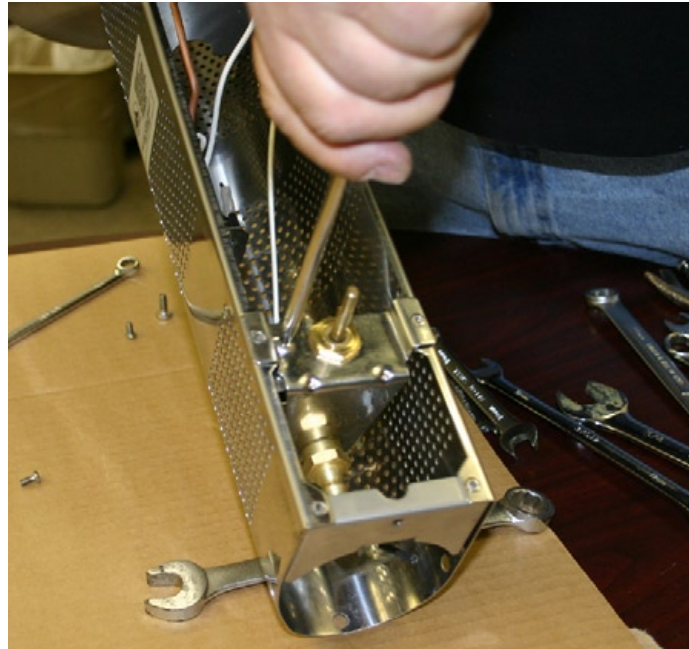
Step 11



1. Connect the thermal-couple wire to the back of the control valve. Finger tight plus a 1/4 turn with the #8mm open end wrench.
2. Attach the small access panel.



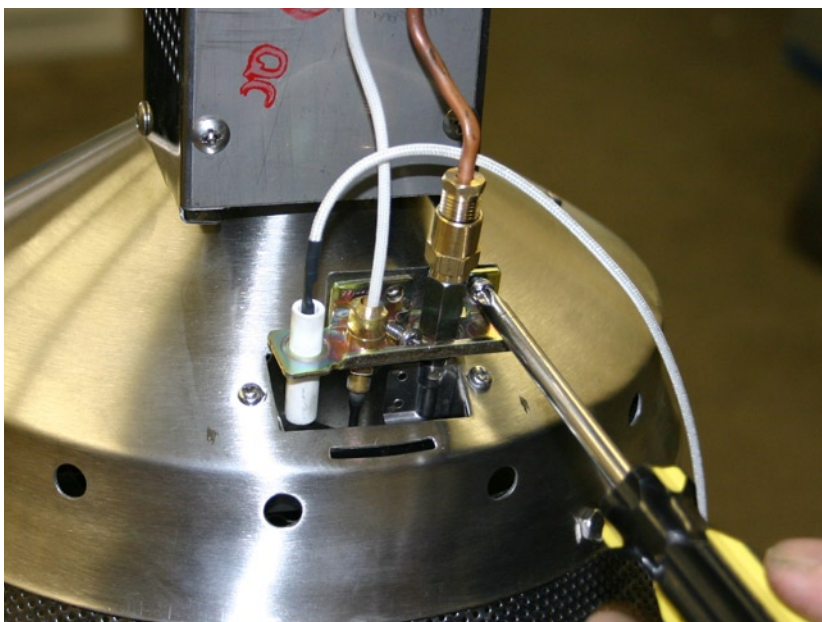
Step 12



Attach the tip switch bracket to the valve support.



Step 13



1. Slide pilot up into the pilot housing.
2. Attach the pilot supply tube. **Do not fully tighten.**
3. Secure pilot assembly to the pilot bracket with 2 screws
4. Tighten pilot supply nut.



Steps 14-17

14. Attach the engine to the post

15. Burner Connections

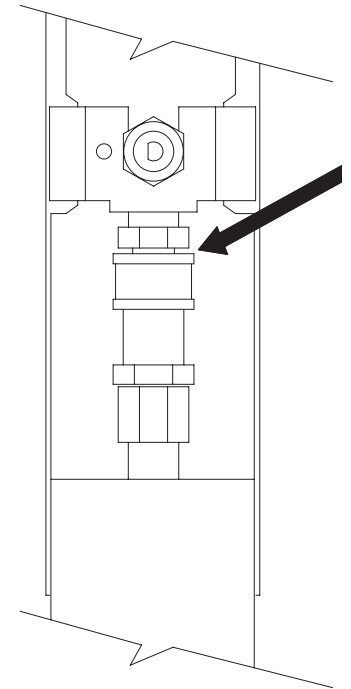
1. Make sure the regulator valve and hose connections are securely fastened to the burner and the tank.
2. If your unit was assembled for you, visually check the connection between the burner pipe and orifice. Make sure the burner pipe fits over the orifice.

WARNING: Failure to inspect this connection or follow these instructions could cause a fire or an explosion which can cause death, serious bodily injury, or damage to property.

3. Please refer to diagram for proper installation.
4. If the burner pipe does not rest flush to the orifice, please contact 1.800.762.1142 for assistance.

16. Attach the dome

17. Attach the LP gas tank



Step 18 - IMPORTANT

Perform leak check.



WARNING **FOR YOUR SAFETY**

If you smell gas -

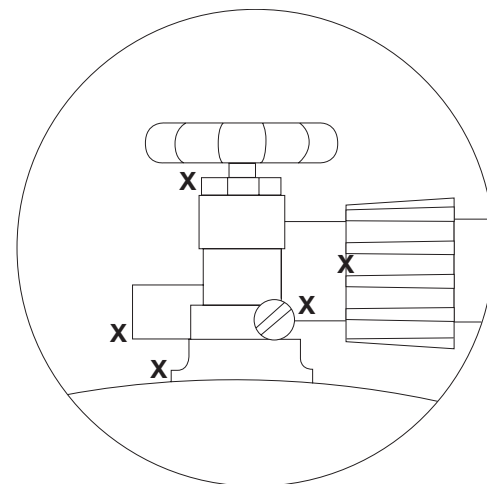
1. Shut off gas to appliance.
2. Extinguish any open flame.
3. If odor continues, immediately call your gas supplier or your fire department.

1. Do not operate if gas leak is present. Gas leaks may cause a fire or explosion.
2. You must follow all leak-checking procedures before operating. To prevent fire or explosion hazard when testing for a leak:
 - a. Always perform leak test before lighting the heater and each time the tank is connected for use.
 - b. No smoking. Do not use or permit sources of ignition in the area while conducting a leak test.
 - c. Conduct the leak test outdoors in a well-ventilated area.
 - d. Do not use matches, lighters, or a flame to check for leaks.
 - e. Do not use heater until any and all leaks are corrected.If you are unable to stop a leak, disconnect the LP gas supply. Call a gas appliance serviceman or your local LP gas supplier.



Tank/Gas Line Connection

1. Make 2-3 oz. of leak solution by mixing one part liquid dishwashing soap with three parts water.
2. Make sure control knobs are off.
3. Turn LP gas tank ON at valve.
4. Spoon leak check solution at all “x” locations
5. If any bubbles appear turn LP gas tank OFF, reconnect and re-test. If you continue to see bubbles after several attempts, disconnect LP gas source and contact 1.800.762.1142 for assistance.
6. If no bubbles appear after one minute turn tank OFF, wipe away solution and proceed.



Pilot & Pilot supply tube

1. Make 2-3 oz. of leak solution by mixing one part liquid dishwashing soap with three parts water.
2. Turn LP gas tank ON at valve.
3. Turn control knob on to LOW
4. Remove access panel
5. Place leak solution on pilot supply tube at the pilot and at the control valve.
5. If any bubbles appear turn control valve OFF, check all connection to make sure they are tight, and retest. If you continue to see bubbles after several attempts, turn control valve off and disconnect LP gas source and contact 1.800.762.1142 for assistance.
6. If no bubbles appear after one minute turn tank OFF, wipe away solution and proceed.



Blue Rhino Global Sourcing, LLC
104 Cambridge Plaza Drive, Winston-Salem, NC 27104 USA
1.800.762.1142, www.bluerhino.com

© 2004 Blue Rhino Global Sourcing, LLC All Rights Reserved.
Endless Summer® is a registered trademark of Blue Rhino Global Sourcing, LLC All Rights Reserved.
Blue Rhino® is a registered trademark of Ferrellgas, L.P. All Rights Reserved.