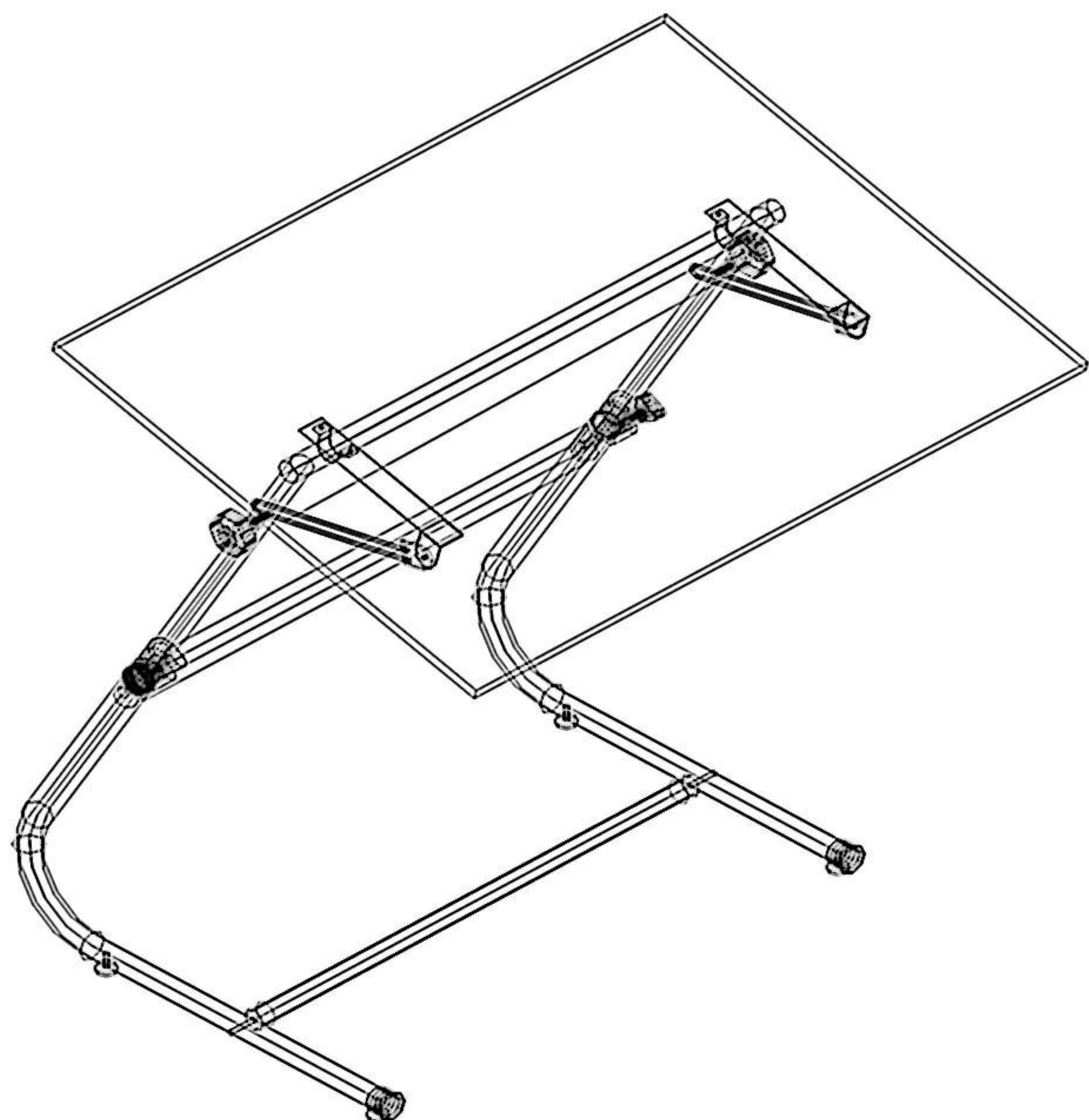




Assembly Instructions VISTA TABLE--VT42 VT48

Vista Base Accommodates 30"x42" , 31"x42" , or 36"x48" Board Sizes .

Parts List



A. Leg Frame

B. Cross Bar

C. Screws 2"

D. Collar & Knob

E. Table Top Attachment Bracket

F. Upper Support Tube

G. Connecting Plate / Slide Arm

H. Tilt Adjustment Knob

I. Floor Glide

J. Carriage Bolt

K. U-Shaped Channel

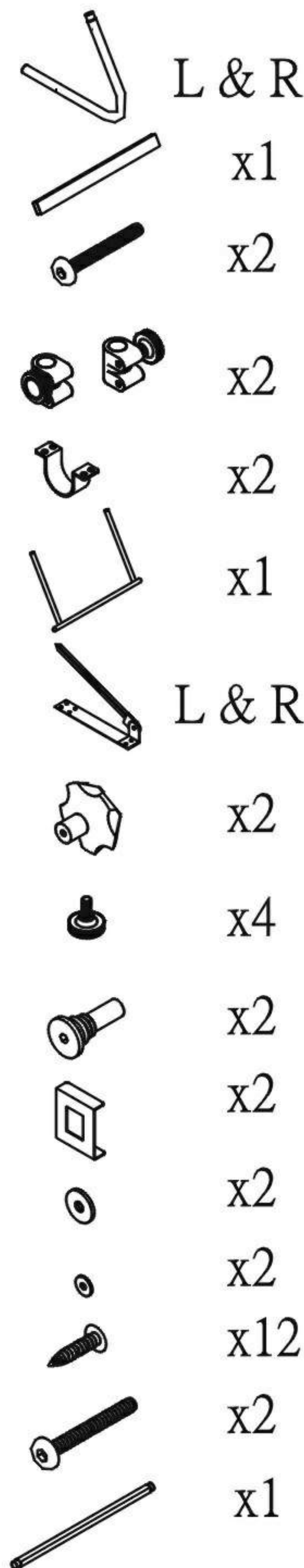
L. Large Washer

M. Small Washer

N. Phillips Screws 5/8"

O. Allen Bolt 2 1/4"

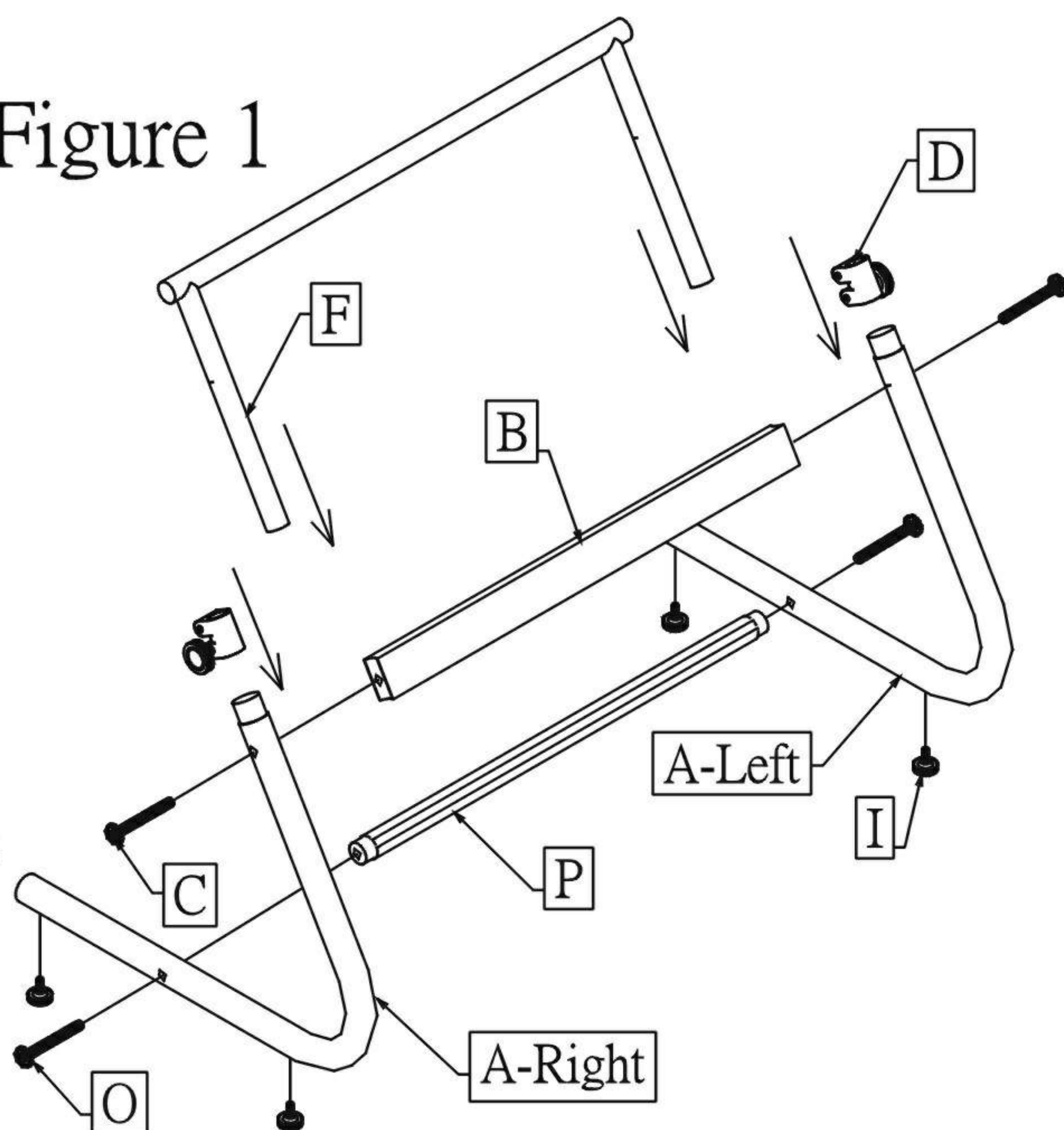
P. Footrest



Assembling the Base

1. Screw floor glides "I" into holes in bottom of leg frames "A".
2. Attach leg frames "A" to the horizontal cross bar "B" using screws "C". Make sure that the side of each leg frame with the larger diameter hole faces out. Attach footrest bar "P" to leg frames using allen bolt "O". Tighten everything very securely, especially screws "C".
3. Place collar and knob assemblies "D" on top of each leg tube with the adjustment knobs facing out. Tighten lower screws with phillips screwdriver.
4. Insert upper support tube "F" into the leg frames "A" until only about 8" of the support tubes are exposed. Lock in place by tightening the height adjustment knobs "D". Set base assembly aside.

Figure 1



Alvin & Company, Inc. www.alvinco.com
1335 Blue Hills Ave, Bloomfield, CT 06002 U.S.A
Tel: 860-243-8991 Fax: 860-242-8037

Figure 2

- Place the tabletop on a carpet or other protected surface that will not scratch the board. The side of the board that you want to face up when table is assembled should face down at this time.
- Based on the board size you have, use the correct diagram at the bottom of this page to determine the locations of the connecting plate / slide arm assemblies "G". Pay special attention that the hinged side of each is facing out and the hole patterns are oriented correctly. Use a drill or an awl to start each or the 12 holes. For the time being, install only 2 screws "N" on each connecting plate that are closest to the hinge.
- Place the base assembly on top of the board as shown in Figure 2.
- Using table top attachment brackets "E", secure the upper support tube "F" to the board with screws "N" as shown in Figures 2&3.
- Connect the slide arm assemblies "G" to the upper support tube "F" with hardware as shown in Figure 4. Tighten adjustment knob "H" securely.
- Carefully lift the table into the upright position. Adjust height and tilt as desired.

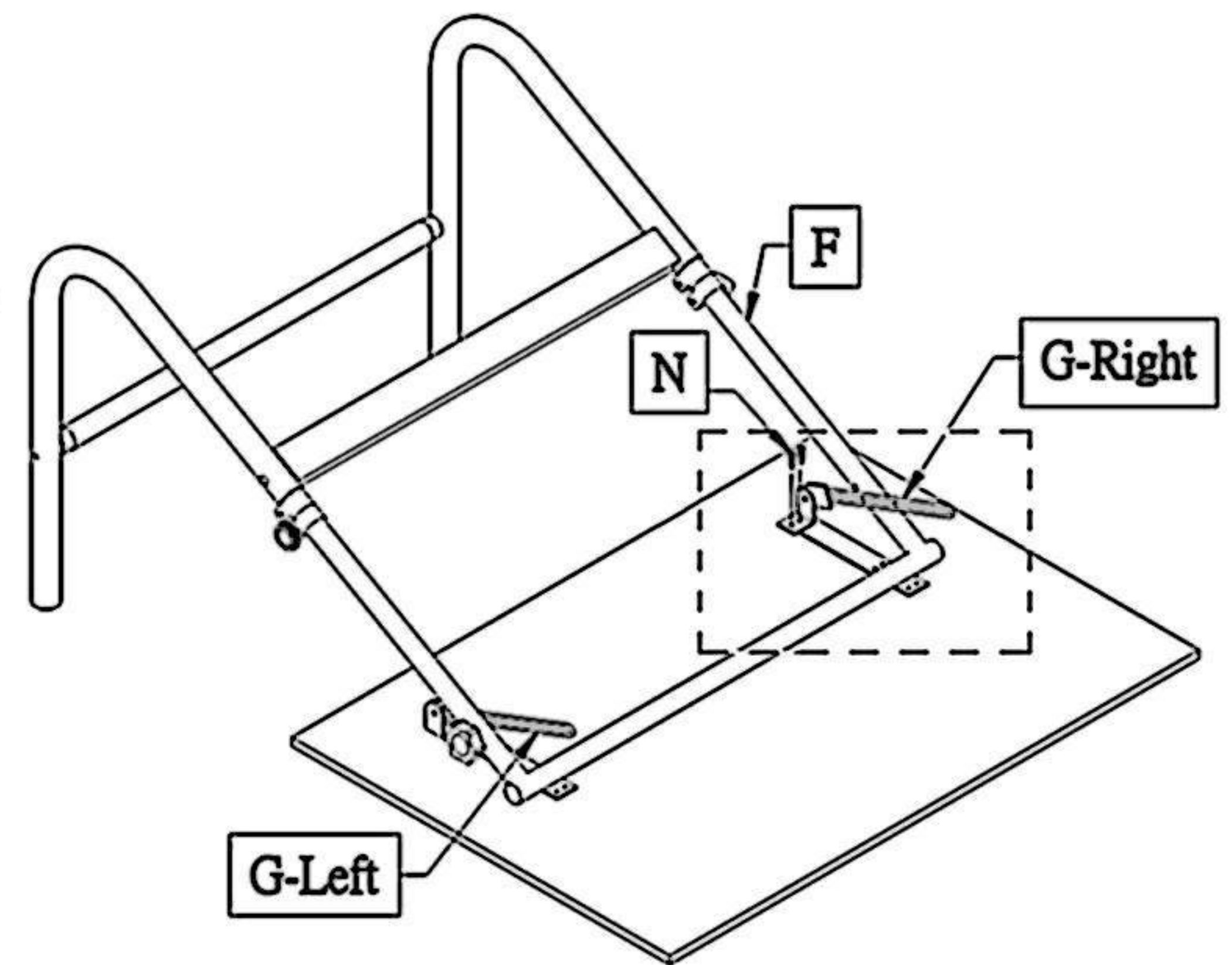


Figure 3

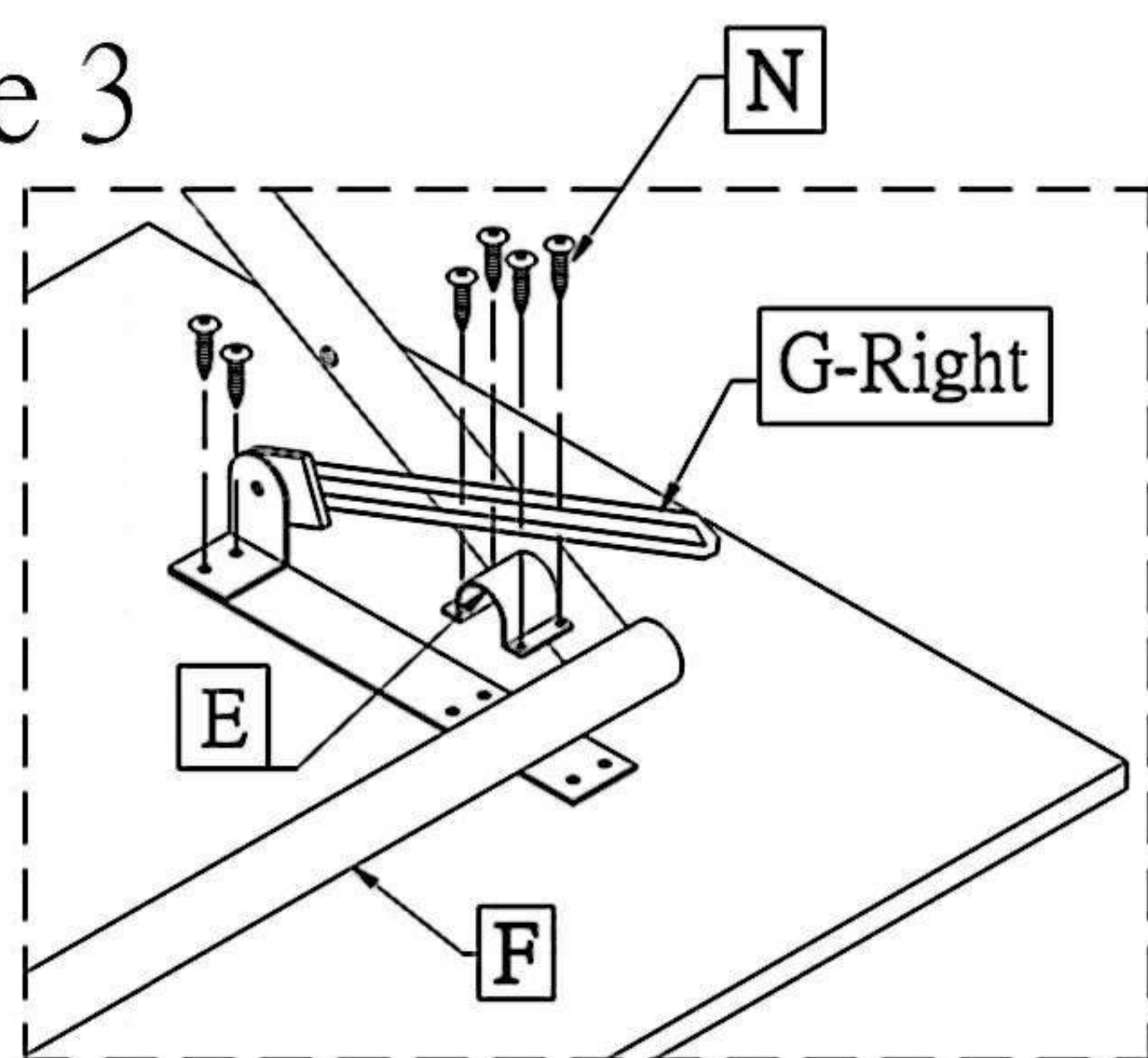
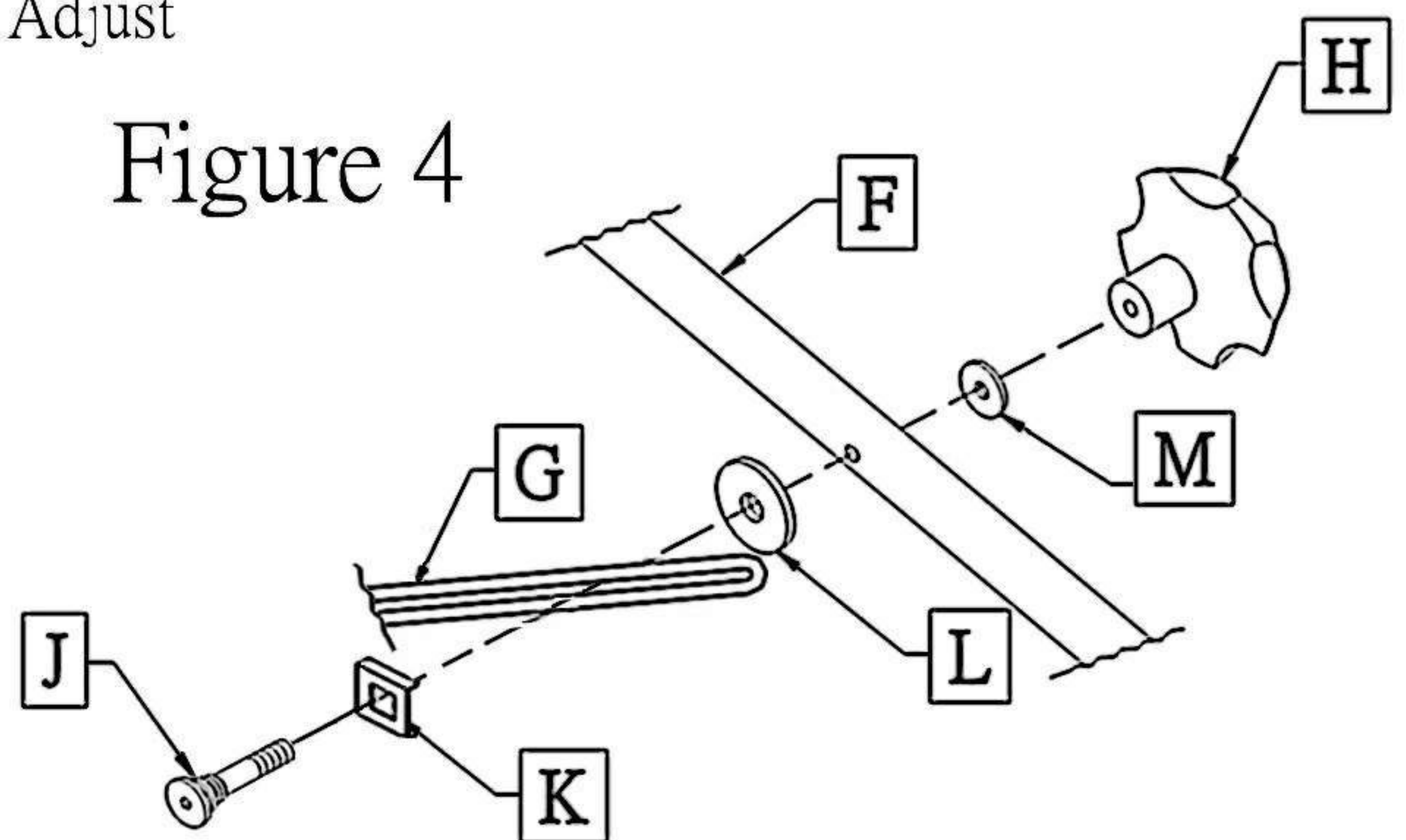
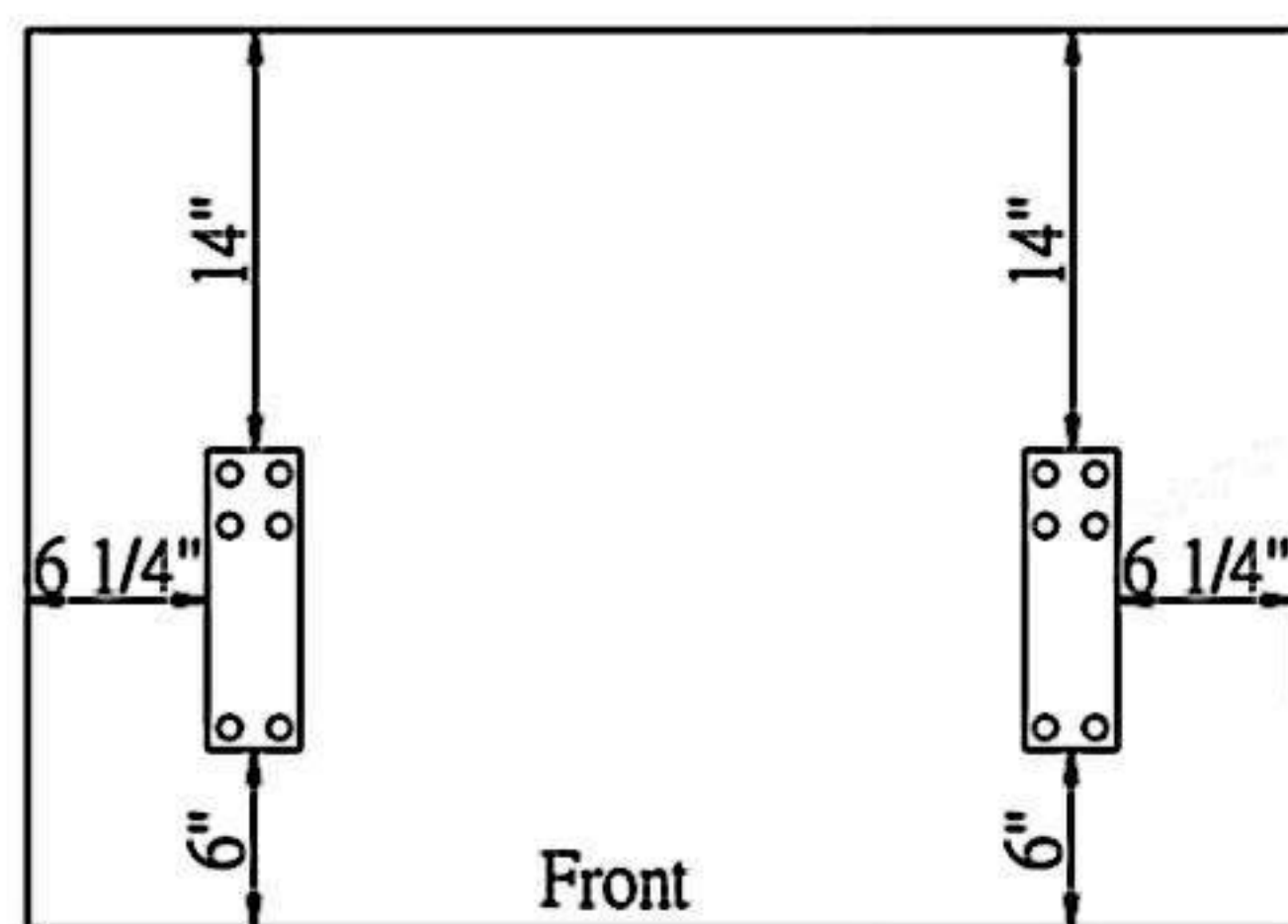


Figure 4

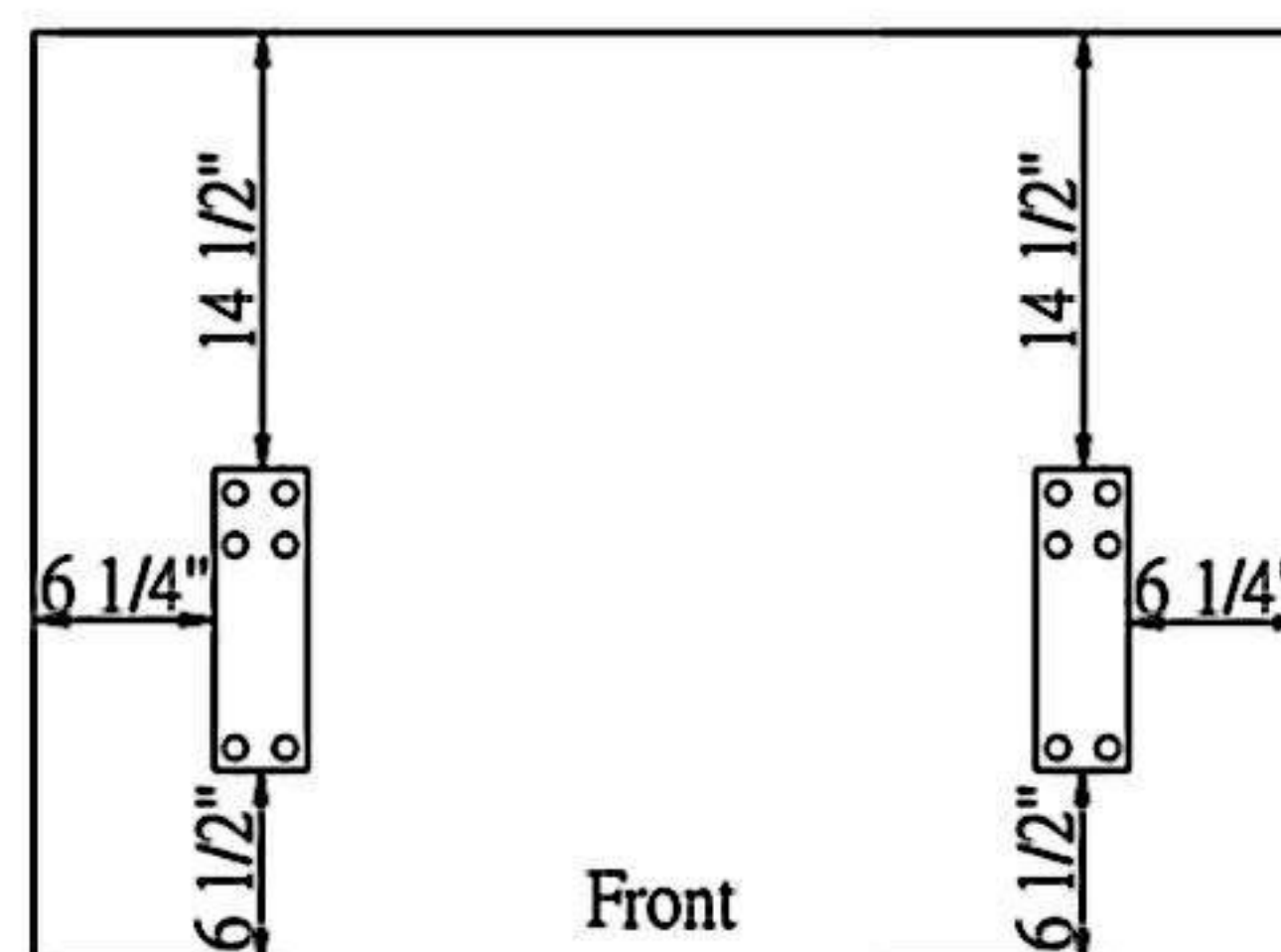


VISTA Table- Locating Dimensions For Connecting Plates, Part G"

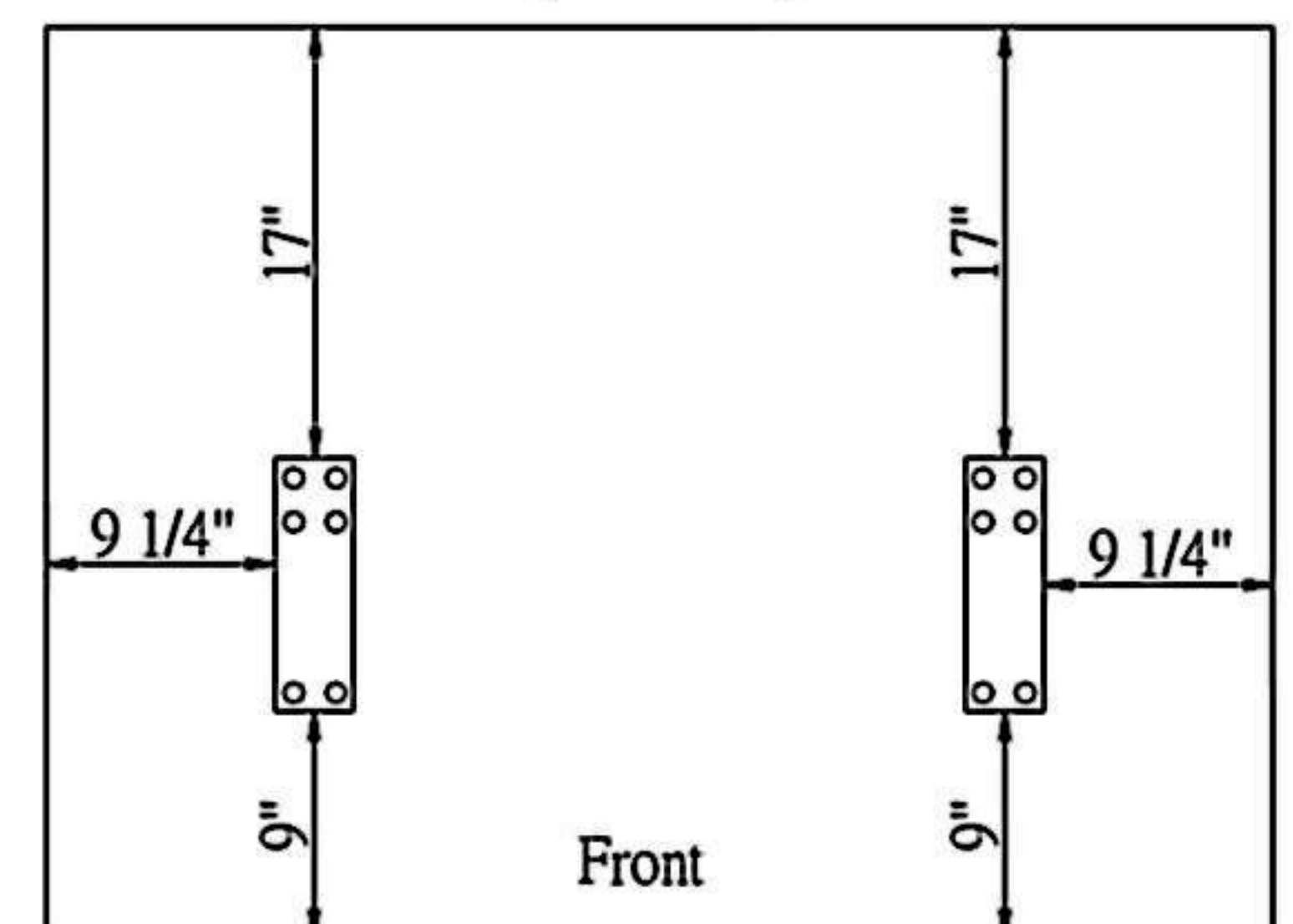
30"×42" Board
(CC2001D)



31"×42" Board
(VT42)



36"×48" Board
(VT48)



Height Adjustment Instructions

- Lock tabletop in horizontal position
- Lean entire table assembly forward until the front edge of the tabletop rests on the floor
- Loosen height adjustment knobs "D"
- Push or pull lower leg assembly until desired position is reached
- Retighten knobs "D" and return table to upright position