

CANOPY PART LIST

No.	Part #	Description	Qty
1	15266	Leg tube(A)	4
2	15271	Leg tube(B)	4
3	15270	Corner cover for leg tube	12
4	15239	Inner washer for leg tube	4
5	15240	Slide connecter for leg tube	4
6	15237	Plug for leg tube	4
7	15274	Gemel (Folding Holder) A	8
8	15275	Gemel (Folding Holder) B	8
9	15277	Slide tube(A)	4
10	15278	Slide tube(B)	4
11	15279	Inclined holding tube	4
12	15280	Hex bolt 1/4" L40	20
13	15281	Hex bolt 1/4" L37	4
14	15283	Hex bolt 1/4" L26	16
15	15284	Hex bolt 1/4" L25	12
16	15256	Nut 1/4"	52
17	15257	Spring pin fit for 15266	4
18	15348	Spring pin fit for 15271	4
19	15285	Top crest	1
20	15286	Plug for gemel	56
21	15287	Gemel Corner bush(A)	44
22	15288	Gemel Corner bush(B)	24
23	15289	Gemel Corner bush(C)	20
24	15351	Gemel Corner bush(D)	4
25	15263	PP washer	12
26	15290	Cover	1
27	10431	Anchors	4

Model #22576



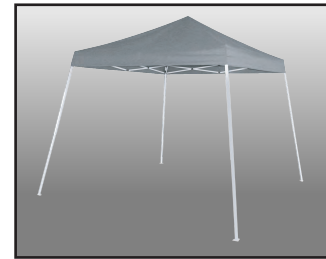
10 x 10 POP-UP CANOPY

Please read instructions COMPLETELY before assembly.

Missing Parts, Need Replacements, or Help with Assembly Please Contact Customer Service:

1-800-524-9970

West Haven, CT 06516



"Sets Up in 60 Seconds!"

SET UP

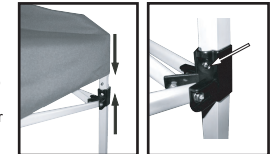
STEP 1

Begin by placing your canopy near the center of the set-up area. Along with a helper grasp a canopy leg in each hand. Slightly lift the frame off the ground and step backwards, pulling the frame apart until your arms are fully extended as shown in the illustration.



STEP 4

Slide the auto slider at each corner up, while holding the corner of the frame down until the snap button engages into the hole. Then, pull the corner of the cover down snugly.



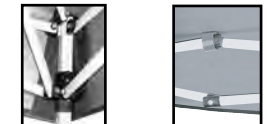
STEP 2

Carefully unfold the fabric top and place it over the frame, making sure to align the corners of the top with the corners of the frame.



STEP 5

Attach the top to the frame by matching the loop fastening strip on the frame. pull the corners down fully. Push the loop firmly together at each corner.



STEP 3

While taking care not to pinch your fingers, grasp the frame section marked "Open Here" and push up until the canopy is fully opened.

Do not put your hand like the picture.



STEP 6

Lift up outer legs and slide out the inner legs until the snap button locks. Repeat on the opposite legs.



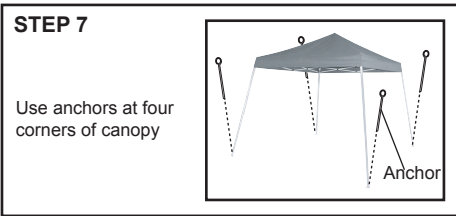
For Replacement Parts or Help with assembly, Please call:

Customer Service:

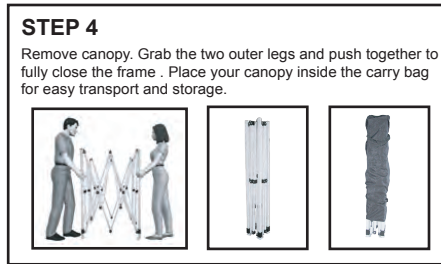
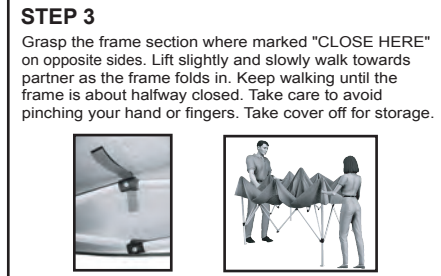
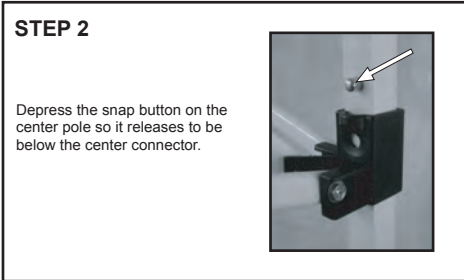
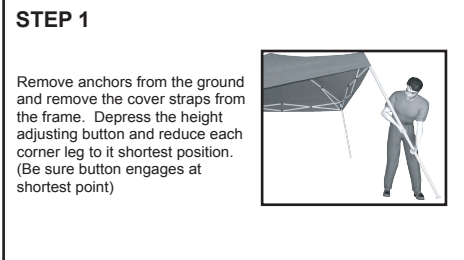
1-800-524-9970

8am-7pm

Mon-Sat EST



TAKE DOWN



CARE & CLEANING INFORMATION

DO NOT expose top or walls to open fire or flame. **DO NOT** use barbeque grills or smokers underneath canopy. **DO NOT** use harsh abrasives, bleach or cleansers. Cover and walls can be easily cleaned with mild soap and water. Periodically check stakes or anchors to ensure stability of unit, especially following exposure to high winds or heavy rain. **NOT** meant to hold snow load, brush snow off top with a broom or mop.

IMPORTANT: PLEASE READ CAREFULLY

North American Outdoor Products has no control over the elements such as wind, snow or heavy rain, we cannot be responsible for damage caused by the canopy or to the canopy. We suggest you contact your insurance carrier for information just as you would for any other outside structure. This is a Temporary Structure and is not recommended as a permanent structure. Safety glasses must be worn when securing bungs.

Improper Anchoring, Strong Winds, Snow or Ice

North American Outdoor Products does not guarantee these canopies in snow or ice under any circumstances. Canopies are designed to offer protection from damage caused by sun, light rain, tree sap, & birds, and are not designed to hold the loads that accompany snow or ice. Any canopy that is not anchored securely or properly will fly away. We will not be responsible for any canopy that blows away. Proper anchoring is your responsibility. We offer several anchoring kits, call customer service for more information or to place an order. Your canopy's cover can be quickly removed if needed when you know that a strong or severe weather front is approaching.

Replacement Parts

Additional covers, tubes, & walls are available directly from the factory through our customer service department. (1.800.524.9970) Covers and walls have been treated to withstand high U.V. exposure for longer periods of time than tarps or covers bought at hardware stores or home centers.

