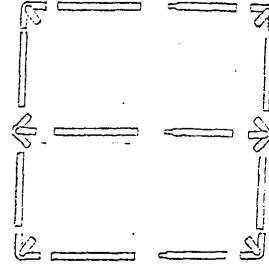


# 10 x 10 Pup Tent

## Parts:

- 11 5'8" Galvanized Pipe
- 3 4'6" Galvanized Pipe w/ swaged end
- 6 3 Way Corners
- 1 Bundle of Elastic Ball Straps
- 1 UV rated tarp

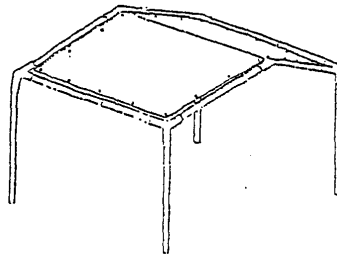
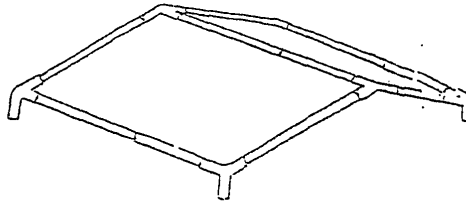


## Instructions:

1. Place all corners and pipe on the ground as shown above. There are 3 swaged end pipes that are used with the other pipe to form the length.
2. Start from the center and complete the center of the frame; then assemble each side.
3. Place tarp over the frame. Tie elastic ball straps as shown in diagram. When tying elastic ball straps, alternate from one side to the other for easier installation.
4. Lift one side of canopy top and insert legs. Proceed to the other side and insert legs.

**Note:** For more permanent installation, anchor framework to ground using tie downs or the proper anchor kit.

Powell & Powell Supply Co., Inc.  
1206 Broad Street  
Fuquay-Varina, NC 27526  
(919) 552-9708  
(919) 552-8884 Fax  
Toll Free 1-800-800-6296



## IMPORTANT: PLEASE READ CAREFULLY

The King Canopy is designed for use as a temporary structure that assembles in minutes without tools. After construction, the King Canopy must be securely anchored to prevent damage against winds. This may be done by using ground anchors attached to each leg at the corner and middle braces along the sides. (See drawing)

Because Powell & Powell Supply Co. has no control over wind or snow, we are in no way responsible for damage caused by the canopy or to the canopy. We suggest you contact your insurance carrier for notification just as you would for any other outside structure.

We carry anchor kits that you may order through our company or you may go to your local home improvement center or hardware store or any place sells outside storage buildings. These anchor kits work perfectly for the King Canopy.

