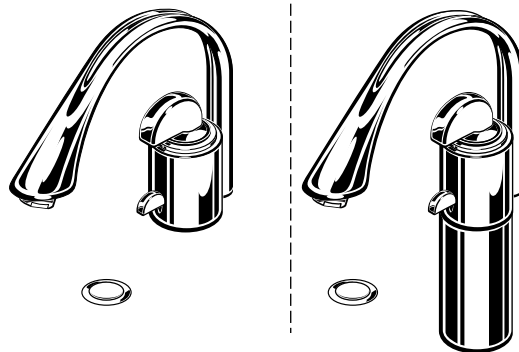


PORCHER®

Installation Instructions

IPERBOLE MONOBLOCK AND BASIN LAVATORY FAUCETS

5131.101
5131.501

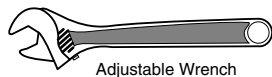


Certified to comply with ANSI A112.18.1M
M968237A

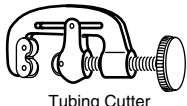
Thank you for selecting Porcher Products.

To ensure that your installation proceeds smoothly—please read these instructions carefully before you begin.

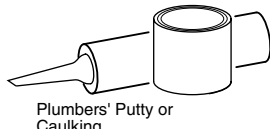
Recommended Tools & Materials



Adjustable Wrench



Tubing Cutter



Plumbers' Putty or
Caulking



Regular Screwdriver



Phillips Screwdriver



Channel Locks

1 INSTALL FAUCET

CAUTION

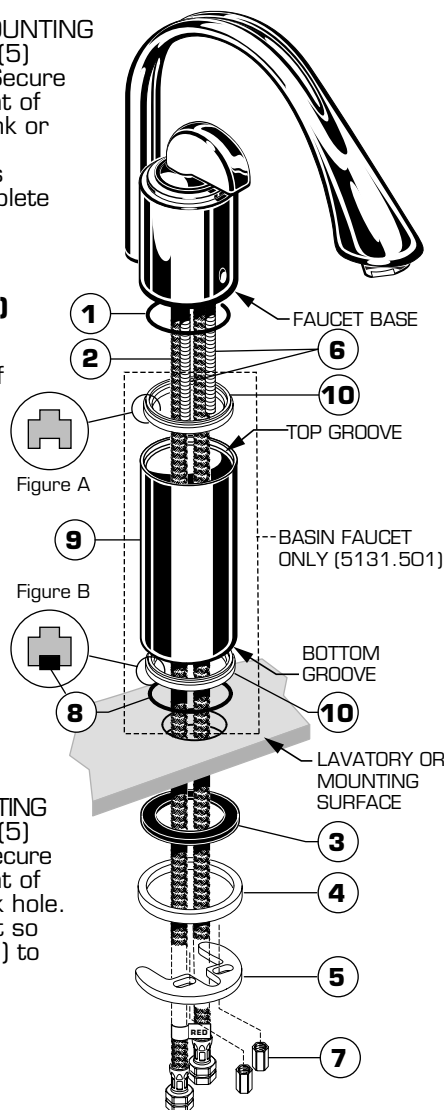
Turn off hot and cold water supplies before beginning.

Installation (MONOBLOCK FAUCET 5131.101)

- Seat SEAL WASHER (1) into groove in faucet base.
- Feed FAUCET SUPPLIES (2) through the center mounting hole of lavatory or mounting surface.
- From below, install GASKET (3), MOUNTING RING (4) and RETAINING WASHER (5) over SUPPLIES (2) and STUDS (6). Secure with NUTS (7), pulling faucet to front of sink, so STUDS (6) rests against sink or mounting surface hole. Before final tightening, adjust faucet so that it is centered. Tighten NUTS (7) to complete mounting installation.

Installation with EXTENSION (BASIN VESSEL FAUCET 5131.501)

- Orient INDEXING RING (10) as shown in Figure A into top groove of EXTENSION (9).
- Slide EXTENSION (9) over SUPPLIES (2) and MOUNTING STUDS (6). The faucet base and EXTENSION (9) should seat together with no space between them. SEAL WASHER (1) is not required.
- Insert remaining INDEXING RING (10) into bottom groove of EXTENSION (9) with SEAL WASHER (8) installed into groove of INDEXING RING (10). See Figure B.
- From below, install GASKET (3), MOUNTING RING (4) and RETAINING WASHER (5) over SUPPLIES (2) and STUDS (6). Secure with NUTS (7), pulling faucet to front of sink, so STUDS (6) rest against sink hole. Before final tightening, adjust faucet so that it is centered. Tighten NUTS (7) to complete mounting installation.

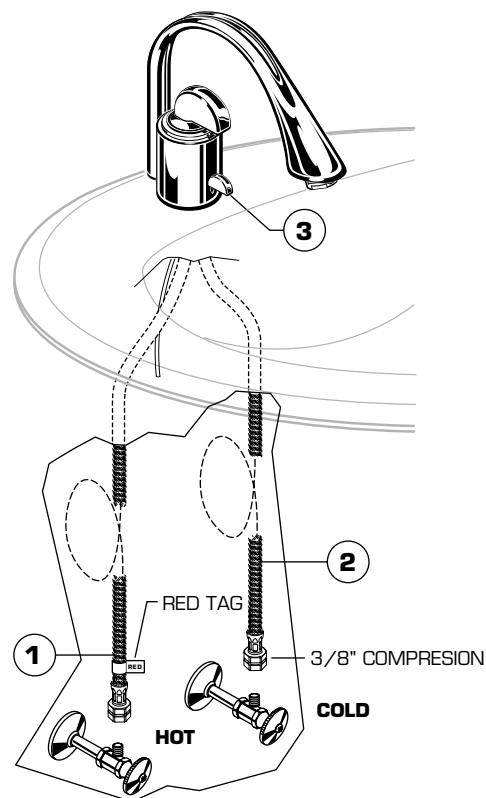


2 MAKE WATER SUPPLY CONNECTIONS

- Connect FLEXIBLE SUPPLIES (1, 2) directly to wall supplies. Connection on fitting supplies are 3/8" compression. Connect left supply to (Hot Marked with a Red Tag) and right supply to Cold wall supply.
- Faucet supplies are 23-1/4" long for monoblock and 17-3/4" long for basin faucet.
- *Note: If additional supply length is required, installer must purchase additional parts separately.*

Important: If SUPPLY HOSES (1, 2) are too long, loop as illustrated to avoid kinking.

- Install POP-UP ROD (3).



3 INSTALL POP-UP DRAIN

- Push Tail piece (11) down into Trap (C) (threaded end up).
- Thread Locknut (5), Washer (4) and Gasket (3) (Bevel side up) onto Drain Body (10).
- Apply a bead of Putty (D) to underside of Flange (2) or (2A).
- Feed Drain Body (10) up through Sink (A) and thread the Flange (2) or (2A) fully onto Drain Body (10).
- Tighten Locknut (5) firmly, keeping the pivot rod hole pointed towards the back of the sink.
- Assemble Pivot Rod (9) or (9A) as shown in Figure-3A. Notice the position of the Concave Washer (G).
- Insert Pivot Rod (9) or (9A) into Drain Body (10) and tighten Pivot Nut (F).
- Push TAILPIECE INSERT (12) into TAILPIECE (11) and push TAILPIECE up and thread tightly into DRAIN BODY (10).
- Position Extension Rod (7) onto Pop-Up Rod (E) and tighten Thumbscrew (6).
- Remove one end of Clip (8) from Pivot Rod (9) or (9A) by squeezing ends together while sliding.
- Insert Pivot Rod (9) or (9A) into second or third hole in Extension Rod (7) and reassemble Clip (8).
- Drop Stopper (1) into Drain Body (10).
- Adjust stopper height by repositioning Extension Rod (7) and tightening Thumbscrew (6).

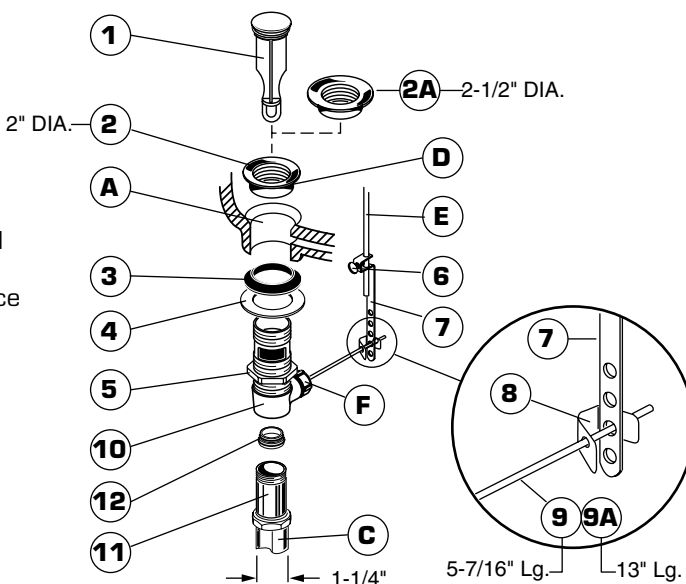
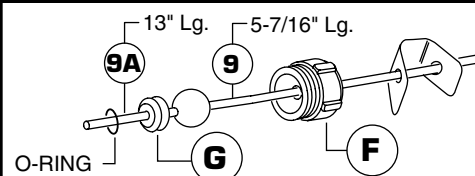
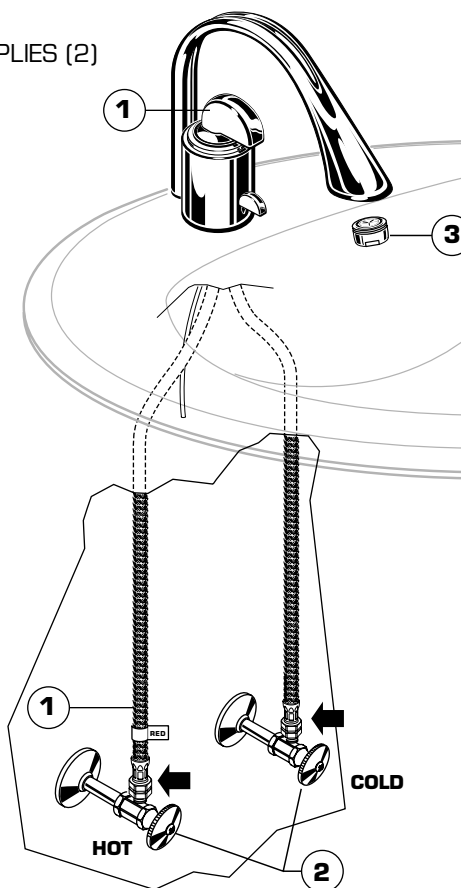


FIGURE-3A:



4 TEST INSTALLED FAUCET AND CHECK FOR LEAKS

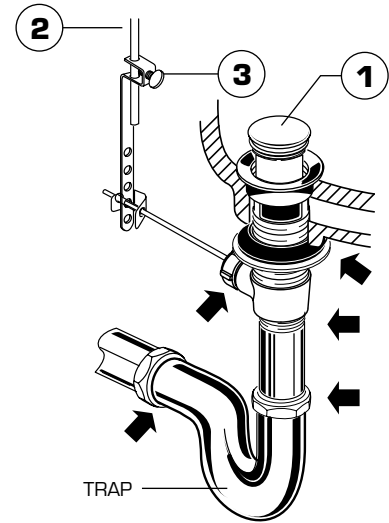
- With HANDLE (1) in OFF position, turn on WATER SUPPLIES (2) and check all connections for leaks.
- Remove AERATOR (3).
- Operate HANDLE (1) to flush water lines thoroughly.
- Replace AERATOR (3).



5

CHECK DRAIN CONNECTIONS

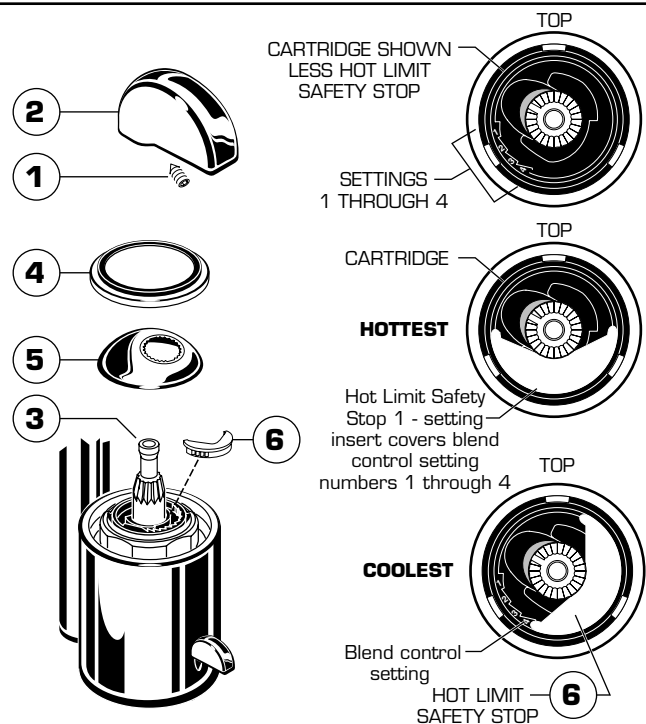
- Operate Lift Rod and fill lavatory with water. Check that DRAIN STOPPER (1) makes a good seal and retains water in lavatory. If necessary adjust stopper height by repositioning Lift Rod (2) and tightening Thumbscrew (3).
- Release DRAIN STOPPER (1) and check all drain connections and "P" trap for ➡ leaks. Tighten if necessary.



6

ADJUST HOT LIMIT STOP

- Turn on valve and allow water supply temperatures to stabilize. Move HANDLE to full HOT setting. Check water temperature.
- To decrease hot limit temperature setting:
 - Loosen Handle Set Screw (1), and remove Handle (2) from Cartridge Stem (3). Pull off Cartridge Cover (4) and DOME (5).
 - Lift HOT LIMIT SAFETY STOP (6), rotate counterclockwise one notch and replace. Check water temperature and repeat if necessary. Unit is factory set at "1" (full HOT water). As the setting number increases, more cold water is mixed in the full HOT handle position.
 - Replace Cartridge Cover (4). Replace Handle (2) and tighten Set Screw (1).



7

CARE INSTRUCTIONS:

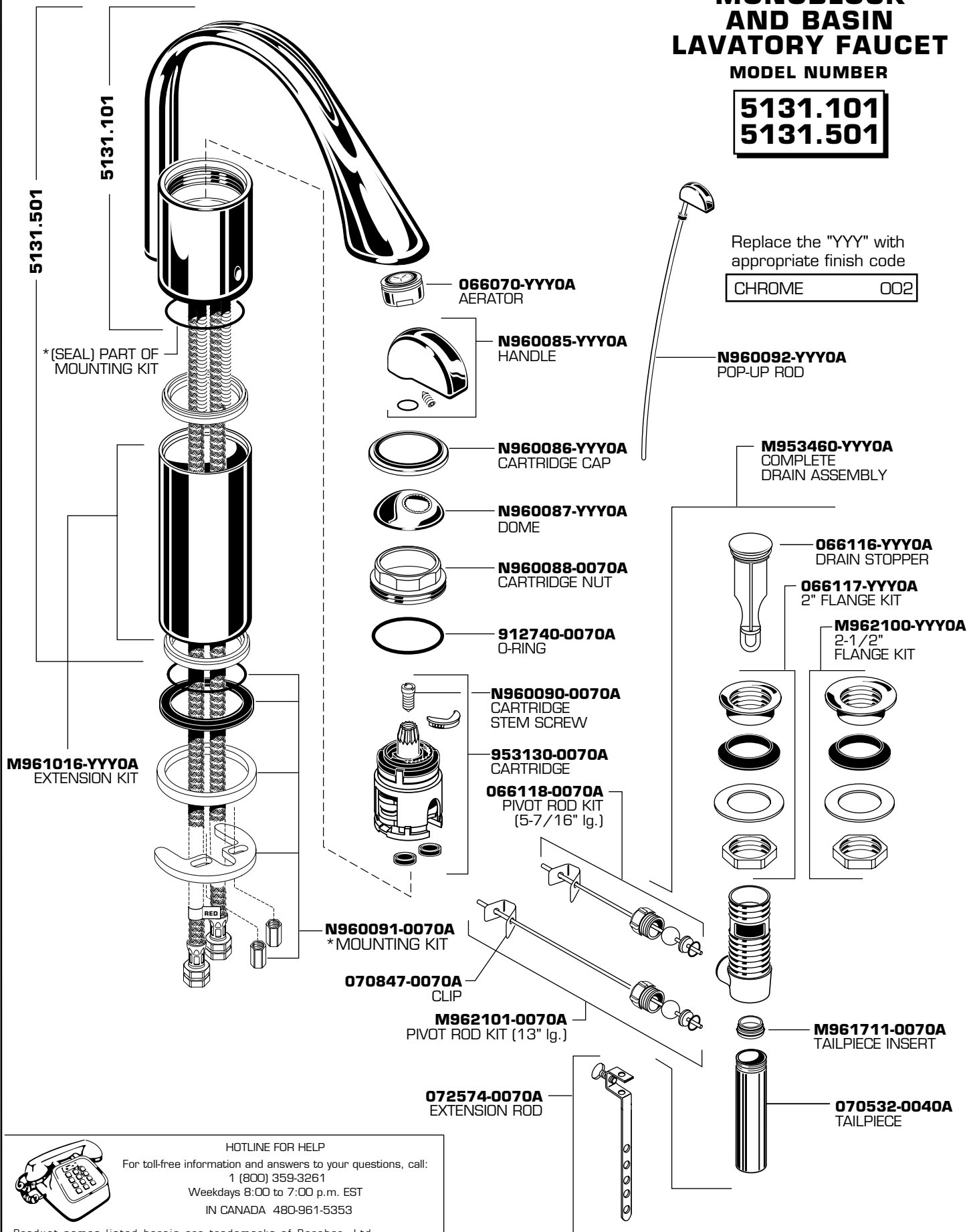
- To keep your new faucet looking new, please follow these simple care instructions:
 - DO:**
 - Simply rinse the faucet clean with clear water.
 - Dry the faucet with a soft cotton cloth.
 - DO NOT:**
 - Do not use any abrasive cleaners, cloths, or paper towels.
 - Do not use any cleaning agents containing acids, polish abrasives, or harsh cleaners or soaps.
- Regular and routine cleaning will reduce the need for heavy cleaning and polishing. If heavy cleaning is required, the following procedures are recommended:
 - Remove as much surface dirt and film using clear water and soft cotton cloth (as described above).
 - Use any of the following to remove tough surface film and build-up:
 - Mild liquid detergents
 - Clear ammonia free liquid glass cleaners
 - Non-acidic, non-abrasive gentle liquid or fully dissolved powder cleansers mixed according to manufacturers directions.
 - Non-abrasive liquid polishers
 - Once clean, rinse faucet again with clear water to thoroughly remove cleaner or polish and blot dry with clean dry cloth.

Failure to follow these care instructions may damage the Faucet's finish.

PORCHER®

IPERBOLE MONOBLOCK AND BASIN LAVATORY FAUCET MODEL NUMBER

5131.101
5131.501



HOTLINE FOR HELP

For toll-free information and answers to your questions, call:
1 (800) 359-3261
Weekdays 8:00 to 7:00 p.m. EST
IN CANADA 480-961-5353

Product names listed herein are trademarks of Porcher, Ltd.
©Porcher, Ltd. 2003

M968237A