



Contour™

tell me about the **G5™** Contour™

*The **G5 Contour™** has not only proven to be great for regular massage and pain relief but has also become popular in spas that use them for cellulite reduction treatments and full body exfoliation. Don't limit yourself!! Enjoy the endless possibilities the **G5 Contour™** has to offer and become part of our **G5** massage machine family, now!!!*

*The **G5 Contour™** comes complete with a Spa Therapy Applicator Package which includes applicators that help perform trigger-point therapy, reflexology, relaxation, lymphatic drainage, tension release, cellulite reduction, exfoliation, and deep muscle massage. A simple, but comprehensive training manual correctly demonstrates techniques and how to properly perform many treatments and services. Easy to use dials control Cycles Per Second speed settings and the timer. Set the timer for how long you want the treatment to last and the **G5 Contour™** will automatically shut off when the time is up! No loud bells or whistles will disrupt your calm spa environment. The Contour also has a built-in safety feature; the machine will not start again until the speed dial has been turned back to the OFF position. The **G5 Contour™** has three different mounting configurations to make the use of the massager as convenient as possible. The unit can be stand mounted with the accessory tray attached, table-top mounted, or wall-mounted. The Contour differs from the Cellutec® in that it has a larger speed range (10-60 CPS vs. 20-60 CPS) and the Contour has a timer and the Cellutec® does not.*

gorgeous

product specifications

- Motor - 1/17 Horsepower
- Output Speed - 10-60 Cycles Per Second
- Power Source - 110V or 220V
- Speed Control - Solid State Electronic
- Current Leakage - under 75 MicroAmps
- Power Cord - 10' Hospital Grade
- Drive Cable - 5'
- Housing Material - ABS Cyclocac
- Configurations - Caster stand, table-top, or wall mounted (hardware sold separately)
- Unit Dimensions - 7 1/2" H x 13" W x 14" D
- Assembled Dimensions - 44" H x 21" W x 21" D
- Unit Weight - 16 Lbs.
- Assembled Unit Weight - 25 Lbs.
- Shipping Dimensions - 22" x 21" x 17 3/8"
- Shipping Weight - 35 Lbs.
- Applicator Packages - SPA-PKG recommended



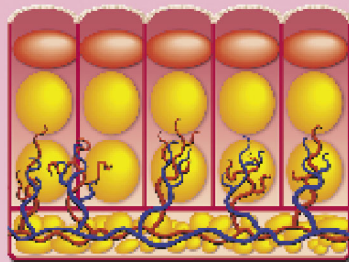
GENERAL PHYSIOTHERAPY, INC.

13222 LAKEFRONT DRIVE - EARTH CITY (ST. LOUIS), MISSOURI 63045-1504 - USA
PHONE: (314) 291-1442 TOLL FREE: (800) 237-1832 FAX: (314) 291-1485 www.G5.com

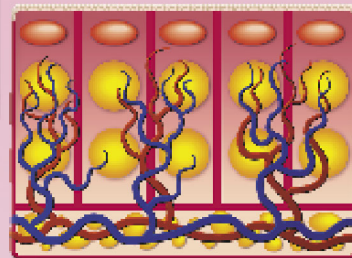


Cellulite therapy reduction

Our **G5** massage devices have not only proven to be great for therapeutic massage and pain relief but have also become very popular in spas who use them for cellulite reduction treatment. Through an exclusive Directional-Stroking® action, these **G5** devices are able to reduce the lumps and bumps of cellulite, make clients feel good about themselves and save the wear and tear on the hands and bodies of spa professionals.



Connective Tissue that has been shrunk by cellulite producing the lumps and bumps in the body.



Healthy Connective Tissue

What is cellulite?

Cellulite refers to the dimpled or “orange-peel” appearance on the thighs, buttocks, hips, knees, back of the arm, arm pit and chest area. Cellulite is more sensitive than normal skin and can feel cold to the touch. It may also appear whiter than the rest of the skin.

Hard cellulite, which is found in active women such as dancers or athletes, is the hardest to reduce of because it attaches right to the muscle. Soft cellulite on the other hand is more noticeable but easier to temporarily reduce.

How do you get it?

Between the skin and muscle is a layer of connective tissue. In between the connective tissue and muscle are fat deposits. When the fat deposits become hard and large they push against the connective tissue and stretch it, which therefore creates the outward appearance of lumps and bumps. This can be caused by a number of things including:

- poor circulation • lack of exercise • poor lymph system drainage • food allergies
- eating foods high in preservatives • yo-yo dieting • too much sun • lack of water
- type of lotion you put on your body • genetics • pregnancy • aging • smoking
- tension and stress • medication

Who gets cellulite?

Primarily women develop cellulite because their connective tissue is composed of x-shaped bands. These bands bind the skin to deeper tissues such as fascia or muscle. The part that is attached to the skin traps the fat, and the fat pushes up on the skin creating the lump and bump effect.

Most cellulite develops in girls around the age of 14 and increases through the years due to the thinning and redistribution of the subcutaneous skin.

Men on the other hand rarely develop cellulite because their connective tissue is perpendicular, which doesn't allow fat to be trapped. Men also have a tougher dermis which hinders the collection of fat buildup.

Is there an answer?

Cellulite is a permanent change in the body. Although there is no cure for cellulite there is a way to effectively fight it and ultimately reduce it. Electromechanical devices like the **G5™ Contour®**, is a cost-effective, device that has proven to temporarily reduce the appearance of cellulite. This device is better than creams because it is non-invasive, unlike liposuction, and clients can see results after a few sessions. With the proper intake of water and the right foods, this massage device can provide results other treatments can't.

*References: www.nlm.nih.gov/medlineplus/ency/article/0020033.htm, www.nlm.nih.gov/medlineplus/ency/imagespages/916.htm, www.cellulite.ev.com/who-gets-it.htm, www.cellulite.eu.com, www.ivillage.co.uk/beauty/bodybasics/cellulite/qas/0,,548152_548937,00.html, www.ivillage.co.uk/beauty/bodybasics/cellulite/qas/0,,548152_549132,00.html, www.ivillage.co.uk/beauty/bodybasics/cellulite/qas/0,,548152_549131,00.html.